



Rigid Vinyl Flooring

Rigid Vinyl Flooring

The floor for all applications

d-c-floor® rigid vinyl flooring is an attractive, robust and easy-to-clean floor covering that fits your lifestyle. Its attractive appearance seamlessly fits every type of room.

Whether the living area, the galley, the bathroom or in the office, **d-c-floor®** rigid vinyl flooring is perfect for refurbishment and new projects. The floor can be laid in a jiffy and is extremely durable.

The natural look of **d-c-floor®** rigid vinyl flooring creates a unique atmosphere in every room.



Innovative
drop-down
click system



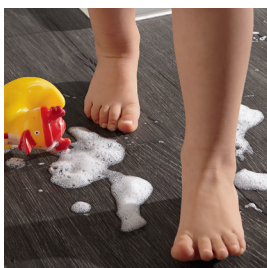
10 year manufacturer
warranty on
abrasion



Product benefits



Ideal for renovation work
due to low construction
height



Water resistance makes
it suitable for use in wet
rooms



Simple installation –
requires only a few
tools and no technical
experience is necessary



Also suitable for
conservatories and rooms
with high levels of direct
sunlight



Lay flooring in large
rooms without expansion
joints

Design overview



Golden Oak

370-0020 1220 × 180 × 4.0/0.3 mm 8 pcs. 1.757 sqm



Hatting Oak

370-0021 1220 × 180 × 4.0/0.3 mm 8 pcs. 1.757 sqm



Gravela Oak

370-0022 1220 × 180 × 4.0/0.3 mm 8 pcs. 1.757 sqm

Design overview



Roseburn Oak

370-0024 1220 × 180 × 4.0/0.3 mm 8 pcs. 1.757 sqm



Corton Oak

370-0025 1220 × 180 × 4.0/0.3 mm 8 pcs. 1.757 sqm



Wingham Oak

370-0026 1220 × 180 × 4.0/0.3 mm 8 pcs. 1.757 sqm

Design overview



Olea Oak



370-0027 1220 × 180 × 4.0/0.3 mm 8 pcs. 1.757 sqm



Likeford Oak



370-0028 1220 × 180 × 4.0/0.3 mm 8 pcs. 1.757 sqm



Design overview



Natural Slate ☐

370-0030 610 × 305 × 4.0/0.3 mm 8 pcs. 1.488 sqm



Bright Concrete ☐

370-0031 610 × 305 × 4.0/0.3 mm 8 pcs. 1.488 sqm



Asian Slate ☐

370-0032 610 × 305 × 4.0/0.3 mm 8 pcs. 1.488 sqm

FAQs

On which surfaces can d-c-floor® rigid vinyl flooring be laid?

The surfaces must be dry, flat, free of cracks, have suitable tensile/compressive strength, clean, stable and permanently connected to the substrate. Textile surfaces must be removed for strength reasons and from a hygiene perspective (risk of mildew formation) prior to installation.

Can d-c-floor® rigid vinyl flooring be laid in the bathroom?

Rigid vinyl flooring is suitable for use in more humid rooms, provided that any standing water will drain away quickly.

Is d-c-floor® rigid vinyl flooring suitable for laying in the conservatory?

Yes, provided that the conservatory is a living space, (ambient temperature 15°C–40°C). d-c-floor® rigid vinyl flooring can also be laid in rooms with more direct sunlight due to its high dimensional stability. Nevertheless, try to create shade in extreme temperatures in order to enhance the floor's durability.

Is the flooring also suitable for outdoor use?

No, this flooring has been specially developed for indoor use.

Is acclimatization necessary before use?

Rigid vinyl flooring must be acclimatized for at least 24 hours at a minimum of 18°C before use. The temperature must also be at least 15°C during installation.

Do expansion joints need to be taken into account during installation?

As the material has high dimensional stability, it can be installed in larger areas without expansion joints (expansion joints only with a room length/width of > 15 m).

FAQs

Will I have to use footfall sound insulation?

Yes, use of an underlay (compressive strength ≥ 200 kPa as per EN 16354) is necessary for design flooring. In this way, the acoustic properties of the rigid vinyl flooring will be optimized, localized unevenness of up to 1 mm corrected and the floor's durability prolonged.

Will I have to use a moisture barrier?

If the vinyl flooring is being laid directly on an underlying mineral surface such as concrete or screed, then use of a moisture barrier is recommended. This will protect your vinyl flooring against rising damp.

Can the rigid vinyl flooring be laid on an underfloor heating system?

Installation on a warm-water floor heating system is not a problem provided the surface temperature does not permanently exceed 27°C. Please note the DIN EN 1264 and DIN 4725 standards as well as the heating protocol.

Is d-c-floor® rigid vinyl flooring harmless to health?

d-c-floor® rigid vinyl flooring is phthalate-free and therefore contains no harmful plasticizers. Plasticizers are subject to strict regulation in Germany/the EU, and our rigid vinyl flooring easily satisfies these requirements.

How can the rigid vinyl floor be cleaned?

Dry cleaning: As a general rule, it is sufficient to clean the vinyl floor with a mop, broom or vacuum cleaner.
Wet cleaning: Damp cleaning with a mop or wiper is recommended. Do not use abrasive or solvent-based, oil-based or wax-based agents, as they can attack the surface of the vinyl.



Processing Instructions



1) Required tools: (angular) ruler, distance spacers, cutter knife, rubber mallet.

2) Installation is from left to right (tongue sides of the panels to the wall). Fix the first row to the wall with distance spacers (5-10 mm).



Drop-down click system: Place the second panel on the groove of the first panel, so that the groove and tongue of both boards fit exactly one on top of the other. Tap above the joint with the rubber mallet until the transition between both panels appears smooth.

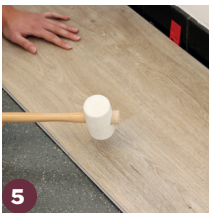


3) The end piece must be adapted to the wall as appropriate. This can be used for the start of the next row (length of at least 30 cm).

The panel is notched on the front with the aid of an angular ruler and a cutter knife using uniform force. Break the edge by first pressing the cut panel downwards and then upwards until it has separated.



4) The long sides of the panels are clicked into the groove of the previous row at a slight angle.



5) Use the rubber mallet on the short sides until the transition appears smooth between the panels.



19

Manufacturer: Konrad Hornschuch AG • Salinenstr. 1
74679 Weißbach • Germany

Unique identification code of the product-type:
LE370-08/2019, 370 Click Design Vinyl/Rigid

Construction product covered by a harmonised standard: EN 14041:2004/AC:2006

Application: Flooring for inside of buildings

Notified Body: 1611

Essential Characteristics

Reaction to fire

Pentachlorophenol content

Formaldehyde emission

Slip resistance

Thermal conductivity

Declared PerformanceClass B_{s1}-s1

< 5 ppm

E1

DS

 $\lambda = 0,130 \text{ W/(m}\cdot\text{K)}$ **ÉMISSIONS DANS L'AIR INTÉRIEUR***

* Information sur le niveau d'émission de substances volatiles dans l'air intérieur, présentant un risque de toxicité par inhalation, sur une échelle de classe allant de A+ (très faibles émissions) à C (fortes émissions).



dcfix



Hornschuch
d-c-home®

d-c-home® is a brand of
Konrad Hornschuch AG
Salinenstraße 1
74679 Weißbach
GERMANY
Tel.: +49 (0)7947 81-0
www.d-c-home.com

K392-6089



4 007386 490100

EN/03.2021