

Hornschuch
d-c-wall®



ceramics

Decorative wall covering

ceramics

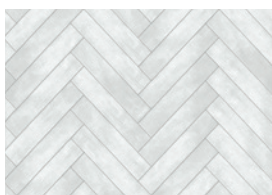
Attractive tile look for your walls

With **d-c-wall® ceramics**, you can bring the high-quality look and ease of care of real tiles to your walls. Whether as a splash guard, a visual enhancement, or a backsplash in the kitchen, bathroom, or laundry room: the washable and resistant wallcovering is installed like wallpaper (see instructions). This enables you to achieve a high-quality tile look without investing a great deal of time and expense. Avoid the dirt and irritation that comes with laying real tiles. Because **d-c-wall® ceramics** are a very clean solution. If you are looking for an attractive do-it-yourself tile look, **d-c-wall® ceramics** is the first solution.



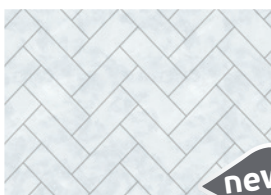
Attractive tile look for your walls





Grey Chevron

270-1015 67,5 cm × 4 m
270-0176 67,5 cm × 20 m



new

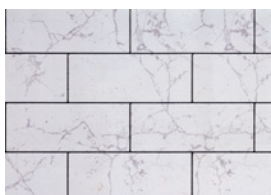
Metallic Chevron

270-1021 67,5 cm × 4 m
270-0182 67,5 cm × 20 m



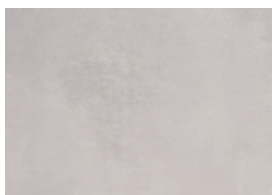
Subway Tiles

270-1005 67,5 cm × 4 m
270-0171 67,5 cm × 20 m



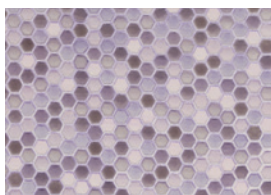
Splendid Marble

270-1014 67,5 cm × 4 m
270-0175 67,5 cm × 20 m



Natural Concrete

270-1013 67,5 cm × 4 m
270-0174 67,5 cm × 20 m



Hexagon grau

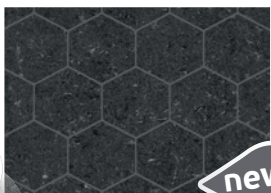
270-0163 67,5 cm × 20 m



new

Rusty Stone

270-1019 67,5 cm × 4 m
270-0180 67,5 cm × 20 m



new

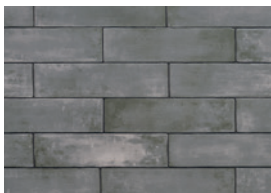
Dark Hexagon

270-1018 67,5 cm × 4 m
270-0179 67,5 cm × 20 m



Tisa

270-1000 67,5 cm × 4 m
270-0166 67,5 cm × 20 m



Asmant

270-1002 67,5 cm × 4 m
270-0168 67,5 cm × 20 m



Stone wall blau-grau

270-1009 67,5 cm × 4 m
270-0161 67,5 cm × 20 m



Stone wall sand

270-1008 67,5 cm × 4 m
270-0162 67,5 cm × 20 m



new

Pastel Tiles

270-1020 67,5 cm × 4 m
270-0181 67,5 cm × 20 m



Shabby Wood

270-1006 67,5 cm × 4 m
270-0172 67,5 cm × 20 m



new

Floral Shapes

270-1017 67,5 cm × 4 m
270-0178 67,5 cm × 20 m



new

Oriental Element

270-1022 67,5 cm × 4 m
270-0183 67,5 cm × 20 m



Moroccan Tiles

270-1016 67,5 cm × 4 m
270-0177 67,5 cm × 20 m



Simenta

270-1003 67,5 cm × 4 m
270-0169 67,5 cm × 20 m

Design overview



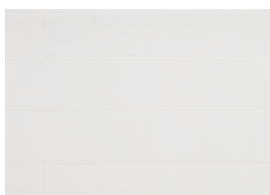
Ancona grau

270-0155 67,5 cm × 20 m



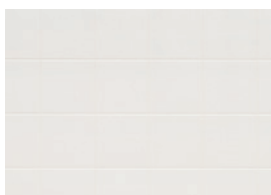
Carrara

270-0157 67,5 cm × 20 m



Caserta

270-1010 67,5 cm × 4 m
270-0158 67,5 cm × 20 m



Cremona

270-0150 67,5 cm × 20 m



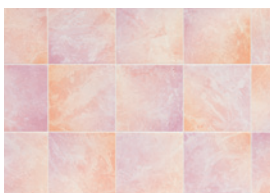
Wave

270-0153 67,5 cm × 20 m



Salerno

270-0151 67,5 cm × 20 m



Prato

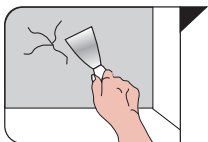
270-0153 67,5 cm × 20 m



ceramics Kleber

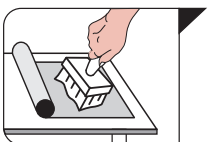
270-1098 750 g

Instructions for application



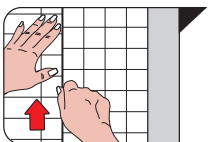
Preparation of under-surface and individual sections

Surfaces (tiles or walls) should ideally be smooth, solid, dry and free of cracks and holes. Any uneven areas have to correct by the use of appropriate filling material (e.g. Metylan surface filler for absorbent under-surfaces).
Cut the first strip.



Apply adhesive

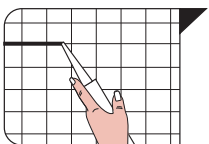
Apply the Ceramics adhesive evenly to the rear side of the Ceramic tiles.



Application of wall covering

Apply the first strip. Cut the next strips to ensure the alignment of the tile pattern, and place it next to the previous strip after applying adhesive. Avoid the need to make joins in the corner the rooms.

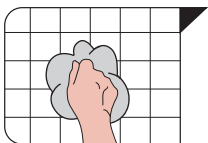
Attention: Immediately remove any spots of adhesive with clean water!



Sealing

In particular in rooms which are subject to moisture, it is essential to ensure that all edges and joins are sealed with PVC cold welding paste (for PVC wall coverings). This prevents moisture from penetrating underneath the all covering.
When finished, ensure that the room is well ventilated!

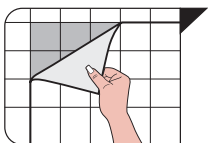
Instructions for application



Cleaning and care

Ceramics is completely waterproof. It is therefore easy to undertake cleaning and maintenance. The cleaning can, for example, be carried out with mild liquid commercial cleaners, soapsuds or similar. Afterwards, always wash the wall covering thoroughly with clean water.

Warning: Always avoid contact with acetone, cleaning solvents and direct heat!



Replacement

Even many years later, it is easy to remove the PVC surface by separating it from the support paper at an upper or lower corner and pulling it in its dry state from the backing. The paper layer which remains on the wall is an ideal under-surface for a subsequent wallpapering activity.



Manufacturer: Konrad Hornschuch AG · Salinenstr. 1 · 74679 Weißbach · Germany
Unique identification code of the product-type:
LE270-02/2016 d-c-wall Ceramics

Construction product covered by a harmonised standard: EN 15102:2011-12

Application: Decorative wall coverings for indoor use

Notified Body: 1658

Essential characteristics

Fire protection

Formaldehyde

Heavy metals and certain elements

Declared performance

Class E

Undetectable

Requirements fulfilled



dcfix

Hornschuch
d-c-home®

d-c-home® is a brand of
Konrad Hornschuch AG
Salinenstraße 1
74679 Weißbach
GERMANY
Tel.: +49 (0)7947 81-0
www.d-c-fix.com

K392-6554



GB/11.2021