



**d-c-fix®**

Self-adhesive **Wall Tiles**

**Big change with little effort**

Self-adhesive

# Wall Tiles

**Great tile look by simply gluing on –  
with d-c-fix® Wall Tiles**

Achieve impressive before-and-after effects with the clever and attractive d-c-fix® Wall Tiles. It could be a tiled wall that you don't like, or a cheap and landlord-friendly solution. The self-adhesive d-c-fix® Wall Tiles are also a smart solution for busy wall areas in the kitchen, bathroom or guest toilet, and are perfect as a durable vinyl wall covering when a modern tile look is desired. And you save yourself the effort, dirt and stress associated with laying conventional tiles. Because the d-c-fix® Wall Tiles are self-adhesive, and can be easily stuck to the wall, tile by tile, and adapted to all conditions by simply cutting them to size. Wall Tiles offer a great design with a distinctive finish for all lifestyles! In short: an all-round clean and beautiful feature – the tile look for easy DIY!



**Before**



**After**



**Rustic Oak**

270-3000A 30,5 × 30,5 cm



**Solid Concrete**

270-3001A 30,5 × 30,5 cm



**Premium Marble**

270-3002A 30,5 × 30,5 cm



**Vintage Style**

270-3003A 30,5 × 30,5 cm



### **Vivid Stars**

270-3009 30,5 × 30,5 cm



### **Vintage Flowers**

270-3008 30,5 × 30,5 cm



### **Moroccan Style**

270-3006 30,5 × 30,5 cm



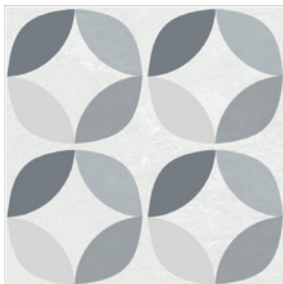
### **Light Slate**

270-3007 30,5 × 30,5 cm



### **Oriental Tiles**

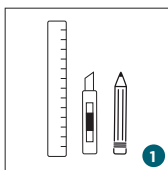
270-3004A 30,5 × 30,5 cm



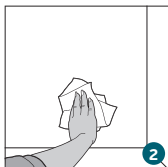
### **Geometric Style**

270-3005A 30,5 × 30,5 cm

## Instructions for Use

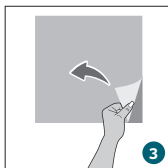


**1. Tools required:** Cutter knife, pencil, rule

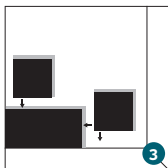


### 2. Prepare the application surface:

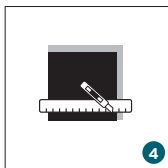
The surface must be clean, even, free of dust, oil and grease, and permanently dry. Level out any unevenness with a filler.



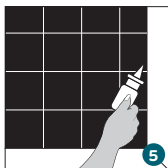
**3. Application:** Peel off the backing paper from the overhanging backing film and stick the tile to the wall. Glue the next wall tile overlapping the overhang of the previous tile edge to edge.



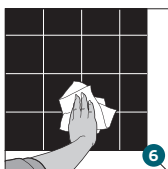
**4. Cut to size:** If necessary, cut the wall tiles to size. To do this, position a rule and run the cutter knife along it two or three times.



**5. Seal:** Be sure to seal all outer edges with silicone, especially in wet rooms. This prevents moisture from penetrating. Air the room well afterwards.



**6. Cleaning and maintenance:** Clean the tiles with a light, commercially available liquid cleaner or soapy water. Then rinse thoroughly with clear water. Caution: Avoid acetone, mineral spirits and direct heat at all costs.





**Manufacturer:** Konrad Hornschuch AG · Salinenstr. 1 · 74679 Weißbach · Germany  
**Unique identification code of the product-type:** LE270-01/2021 d-c-fix SA Wall Tiles

**Construction product covered by a harmonised standard:** EN 15102:2011-12

**Application:** Decorative wall coverings for indoor use

**Notified Body:** 1658

**Essential characteristics**

Fire protection

Formaldehyde

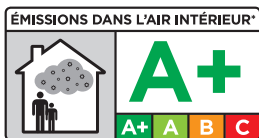
Heavy metals and certain elements

**Declared performance**

Class E

Undetectable

Requirements fulfilled



\* Information sur le niveau d'émission de substances volatiles dans l'air intérieur, présentant un risque de toxicité par inhalation, sur une échelle de classe allant de A+ (très faibles émissions) à C (fortes émissions).



**dcfix**

**d-c-fix®** is a brand of  
Konrad Hornschuch AG  
Salinenstraße 1  
74679 Weißbach  
GERMANY  
Tel.: +49 (0)7947 81-0  
**www.d-c-fix.com**

K392-6511



EN/05.2022